

SCAFFEX

**YOUR SCAFFOLD EXPERT!**

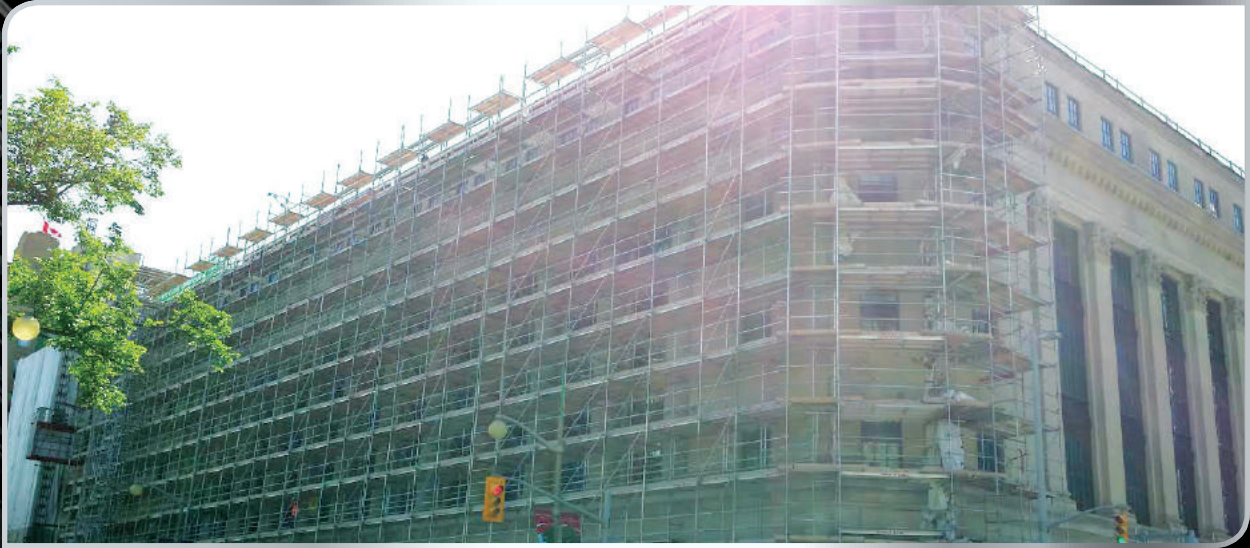
# PRODUCT CATALOGUE

***Ottawa's Scaffolding Expert.***

*From start to finish, we have everything you  
need for your scaffolding project.*

SCAFFOLDING | SHORING | FENCING | GARBAGE CHUTES





### **SCAFFOLDING**

We provide the leading scaffolding equipment marked with the highest quality safety and ease of use.

### **SHORING**

If your project has special requirements, Scaffex can deliver custom solutions that meet your needs.

### **FENCING**

For safety and security of any project, we can supply and install fencing.

### **GARBAGE CHUTES**

We have a variety of garbage chutes to make your next clean-up job quick and easy.

# TABLE OF CONTENTS

Company Profile .....	4, 5
Frames .....	8, 9, 10
Cross Braces .....	11
Wagons and Casters .....	12
Frame Scaffold Accessories .....	13
Side & End Brackets .....	14
Vertical Standards .....	16
Ledgers & Double Ledgers .....	17
Bay Brace & System Truss .....	18
System Side Brackets .....	19
Base-Plate & Screw Jacks .....	22
Conventional Scaffold Accessories .....	23
Pipes & Clamps .....	24
Stairs & Ladders .....	28, 29
Steel Decks & Platforms .....	30
Wood Planks & Ladder Platforms .....	31
Tube Shoring Post .....	34
Multi-Prop Post .....	35
Aluminum Joists .....	36
Aluminum Stringers .....	37
Garbage Chutes .....	40
Temporary Fences .....	41
Scaffold Sheeting .....	42
Debris Netting .....	43
Hoists .....	46, 47, 48, 49, 50
KlimerLite .....	52, 53

## **SCAFFEX INC.**

Ottawa, ON  
Canada

**T** 613.907.7223

**F** 613.741.9141

**E** office@scaffex.ca

For more information on Scaffex Inc. and product updates, please visit our website: [scaffex.ca](http://scaffex.ca)

**Design & Production:** SG Printing Inc.





*“Quality, integrity and commitment –  
These are the core corporate values at Scaffex Inc.”*

## ABOUT SCAFFEX

Established in 2013, Scaffex Inc. provides solutions to the Gatineau/Ottawa region for all their scaffolding needs. Our team of qualified workers and management personnel will ensure to answer your specific needs. We service all sectors of the construction industry: residential, commercial, industrial, institutional and infrastructures, from sales and rental of equipment to our expert installation service accompanied with our technical advice for a truly fulfilled experience.

---

## MISSION STATEMENT

We believe in providing great service at a competitive price, without making any compromise on safety. Using modern equipment we constantly try to innovate new work practices and techniques to increase productivity and thus saving time and money to our clientele. We will work with you from the initial set up to the final dismantle to ensure that your job is a success.



## COMMITMENT TO SAFETY

Here at Scaffex Inc., safety is a priority. We are dedicated to providing our workers with a continuous training program that keeps them updated on latest regulations and safe work practices. We also provide our workers with advance safety systems for fall protection, initiative hazard control procedures and our WHASP program (Work Hazard Assessment and Safety Plan). For us safety is not a task, it's a way of life. Backed by our policies and programs, we are committed to providing a safe work environment to all workers on our projects.

---

## MESSAGE FROM THE PRESIDENT

In the modern construction industry, integrity is everything. At Scaffex inc., we strive at keeping our clients' best interests at heart, building quality into every project. Our goal is to exceed expectations and build partnerships that reach beyond the project at hand.

Quality, integrity and commitment – these are the core corporate values of Scaffex inc. We have assembled a team of educated professionals and provided them with the support and guidance that will allow them to use their exceptional skills in providing a truly safe and reliable access solution. We ensure our client satisfaction is a priority on every project.

We are committed at providing “on time / on budget” unmatched services, through innovative work ethics and utmost modern equipment. We focus on being a leading competitor in the access industry.

*Yves Deschamps*  
**Yves Deschamps**  
President







SCAFFEX  
YOUR SCAFFOLD EXPERT! JUNE





# FRAME TYPE SCAFFOLDING

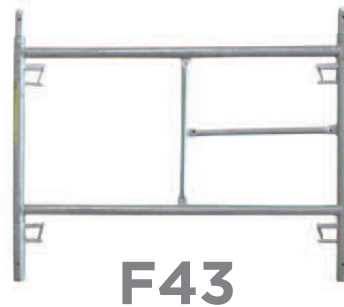
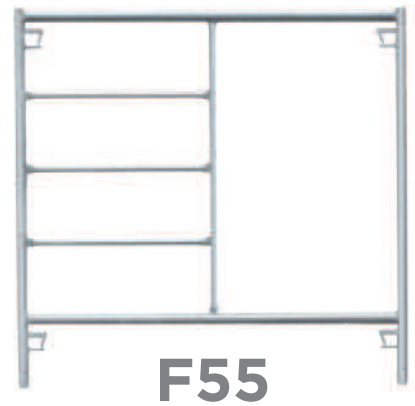
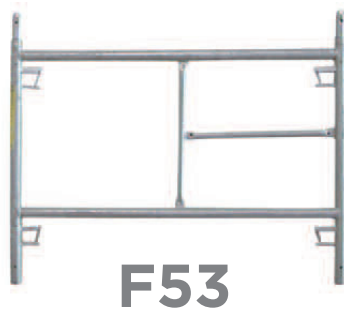
- FRAMES •
- BRACES •
- WAGONS & CASTERS •
- FRAME SCAFFOLDING ACCESSORIES •
- SIDE & END BRACKETS •



# MASSON FRAMES

## MASSON FRAMES

- Most popular Frame
- Galvanized steel
- Tube OD: 1.69"
- Carbon steel



### Masson Frames

Item No.	Description	Weight (lbs)
F55	5' (W) x 5' (H)	37
F53	5' (W) x 3' (H)	29
F45	4' (W) x 5' (H)	35
F43	4' (W) x 3' (H)	27

# NARROW FRAMES

## NARROW FRAMES

- For tight spaces
- Galvanized steel
- Tube OD: 1.69"
- Carbon steel



**F13**



**F15**



**F23**



**F25**

### Narrow Masson Frames

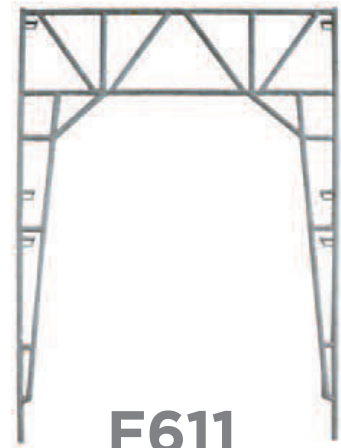
Item No.	Description	Weight (lbs)
F25	30" (W) x 5' (H)	27
F23	30" (W) x 3' (H)	18
F15	16" (W) x 5' (H)	23
F13	16" (W) x 3' (H)	16



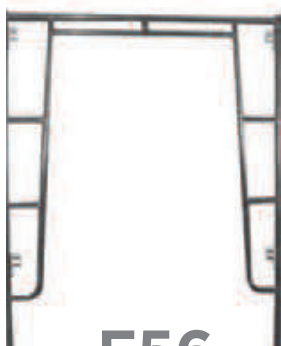
# WALK-THROUGH FRAMES

## WALK-THROUGH FRAMES

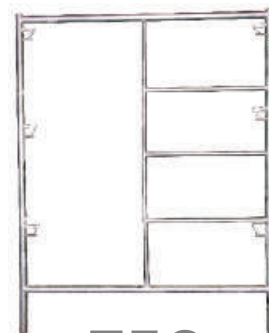
- For overhead protection
- Galvanized steel
- Tube OD: 1.69"
- Carbon steel



**F611**



**F56**



**F56  
LADD**

### Walk-Through Frames

Item No.	Description	Weight (lbs)
F611	6'6" (W) x 10' (H)	101
F56	5' (W) x 6'4" (H)	50
F56LADD	5' (W) x 6'4" (H)	50

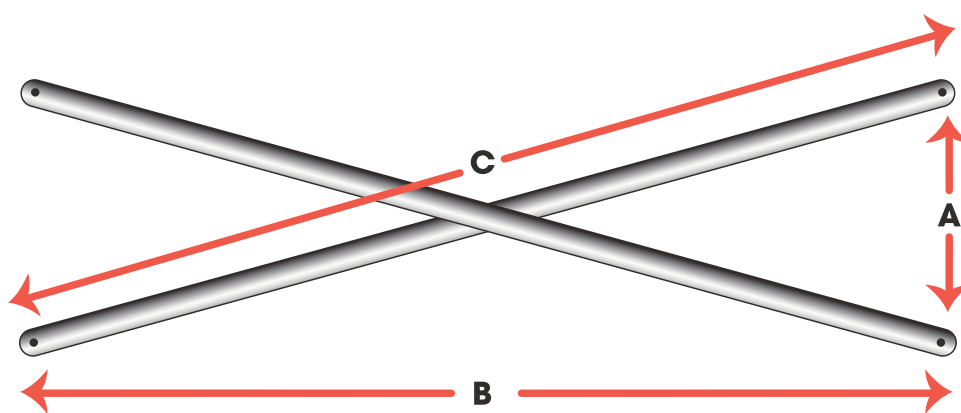
# CROSS BRACES

## CROSS BRACES

**A** = Distance in between the pins

**B** = Distance in between the frames

**C** = Distance from hole to hole approx.



### Cross Braces

Item No.	A	B	C	Weight (lbs)
B42	4'	2'	53 1/2"	5.95
B44	4'	4'	68"	6.5
B52	5'	2'	64 1/2"	7.05
B54	5'	4'	76 3/4"	7.94
B72	7'	2'	87 3/8"	9.48
B74	7'	4'	96 3/4"	10.58
B82	8'	2'	99"	10.04
B84	8'	4'	102 1/2"	10.98
B102	10'	2'	122 3/8"	12.35
B104	10'	4'	129 1/4"	13.89



# WAGONS & CASTERS



**WAGON 16**



**WAGON 26**



**C8**



**C8 RED**



## Wagons & Casters

Item No.	Description	Weight (lbs)	Capacity (lbs)
Wagon 16	Wagon with pneumatic 16"	220	1800
Wagon 26	Wagon with pneumatic 26"	350	1800
C8	Scaffold swivel wheel 8"	12	800
C8-RED	Scaffold swivel wheel 8"	12	2000

# FRAME SCAFFOLD ACCESSORIES



**R10 - R7 - R5 - RAILING**



**R-POST**



**LARML**



**PIGT**



**LARM**

## Frame Scaffold Accessories

Item No.	Description	Weight (lbs)
R-Post	Railing Post for Regular Frame Scaffolding	10.14
R5	5' Gard Rail	6.17
R7	7' Gard Rail	8.64
R10	10' Gard Rail	12.34
Larm	Lock Arm for Mason Frame Scaffolding	0.8
Larml	Lock Arm for Through Frame Scaffolding	1.5
PIGT	Pig Tail Pin	0.09



# SIDE & END BRACKETS



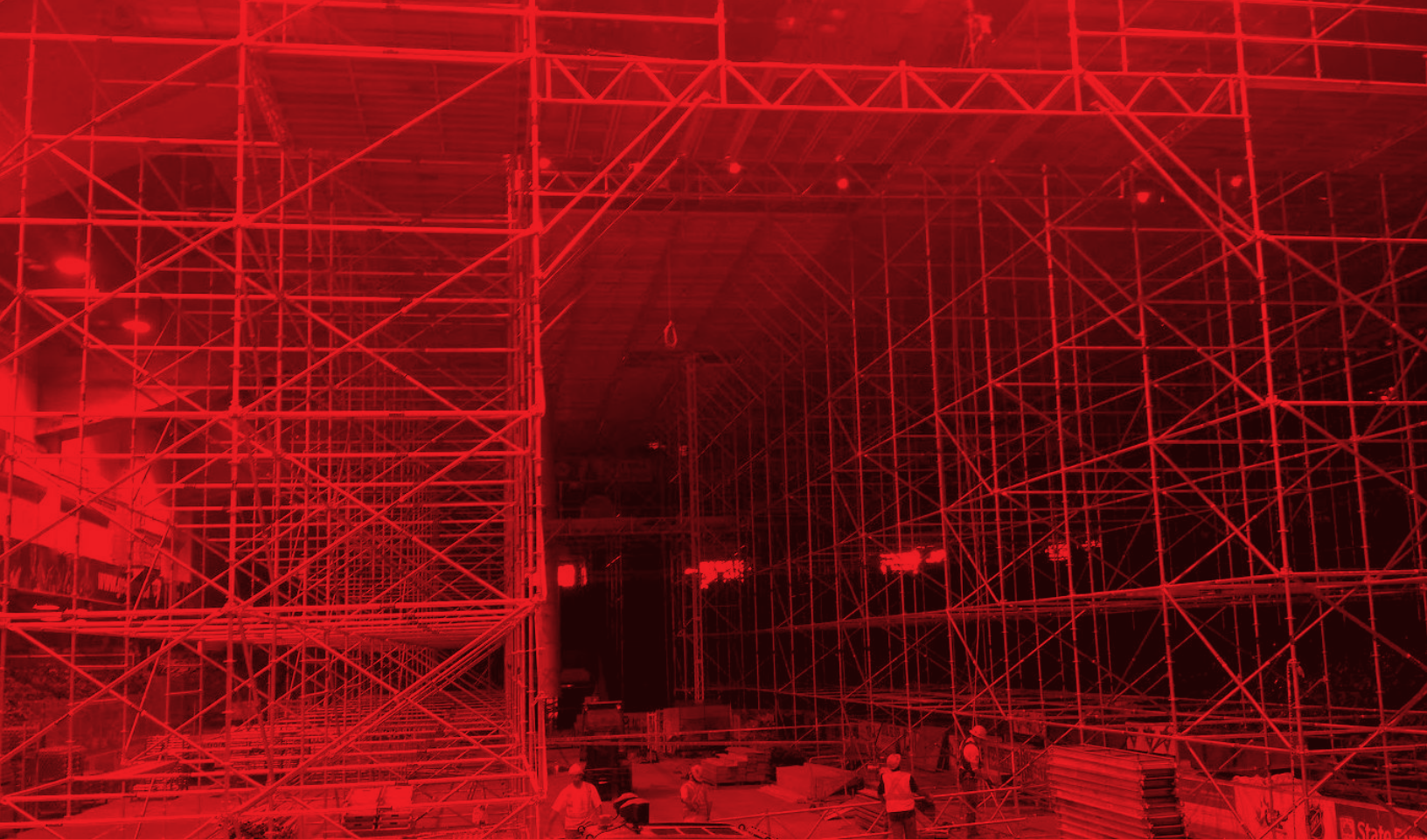
**SB24**



**EB24**

## Side & End Brackets

Item No.	Description	Length (ft.)	Weight (lbs)
SB12	Side Bracket 12"	1'	7.3
SB16	Side Bracket 16"	16"	8
SB24	Side Bracket 2'	2'	11.2
SB30	Side Bracket 30"	30"	14
SB36	Side Bracket 3'	3'	18
EB24	End Bracket	2'	13
EB30	End Bracket	30"	14.5
SB24-36	Adjustable Side Bracket	2' - 3'	13.02

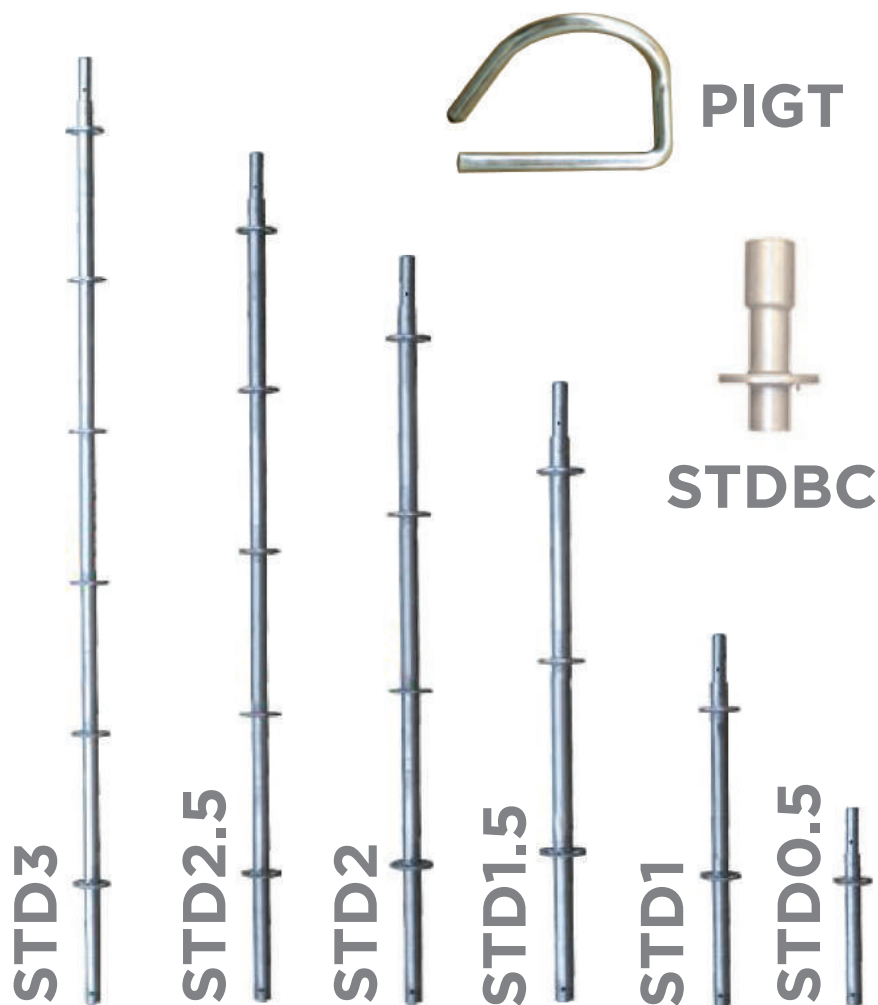


# RING TYPE SCAFFOLDING

- VERTICAL STANDARDS •
- LEDGERS & DOUBLE LEDGERS •
- BAY BRACE & SYSTEM TRUSS •
- SYSTEM SIDE BRACKETS •



# VERTICAL STANDARDS



## Vertical Standards

Item No.	Height (M)		Height (F)	Weight (lbs)
STDBC	0.23 M		9"	4
STD 0.5	0.5 M		1'7"	6.5
STD 1	1.0 M		3'3"	11.6
STD 1.5	1.5 M		4'11"	16.75
STD 2	2.0 M		6'7"	22.75
STD 2.5	2.5 M		8'3"	25.3
STD 3	3.0 M		9'10"	31.02
PIGT	Locking Pin			0.09

# LEDGERS & DOUBLE LEDGERS



## Ledgers

Item No.	Description	Length (in)	Length (mm)	Weight (lbs)
SL0.6	Ledgers 6"	6"	152mm	2
SL1	Ledgers 1'	12"	304mm	3
SL1.6	Ledgers 1'6"	18"	457mm	5
SL2.2	Ledgers 2'2"	26"	660mm	5.51
SL3	Ledgers 3'	36"	914mm	8.61
SL3.6	Ledgers 3'6"	42"	1066mm	9.3
SL3.10	Ledgers 3'10"	46"	1168mm	10
SL4	Ledgers 4'	48"	1219mm	11
SL5	Ledgers 5'	60"	1524mm	12
SL5.4	Ledgers 5'4"	64"	1625mm	13.23
SL6	Ledgers 6'	72"	1828mm	15.8
SL7	Ledgers 7'	84"	2133mm	18.19
SL8	Ledgers 8'	96"	2438mm	19.4
SL9	Ledgers 9'	108"	2743mm	22.9
SL10	Ledgers 10'	120"	3048mm	23.81
SL14	Ledgers 14'	168"	4267mm	35.3



## Double Ledgers

Item No.	Description	Length (F)	Length (M)	Weight (lbs)
DSL7	DBL Ledgers	7'	2.13	33
DSL8	DBL Ledgers	8'	2.44	40.56
DSL10	DBL Ledgers	10'	3.05	48

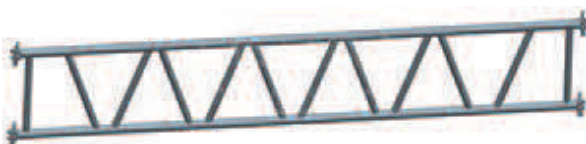


# BAY BRACE & SYSTEM TRUSS



## Bay Braces

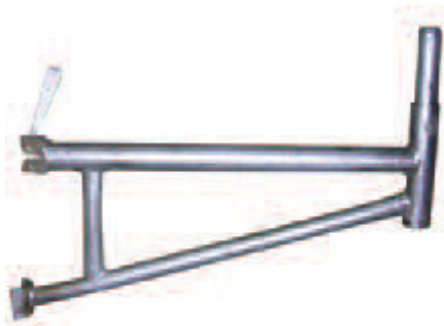
Code	Identification	Length	Weight	Bolt-To-Bolt
BB 2.2	Bay Brace 2'2"	2'2"	16.21 lbs	2.08 m / 81.5"
BB 3	Bay Brace 3'	3'	16.68 lbs	2.13 m / 84"
BB 3.6	Bay Brace 3'6"	45 3/8"	19.3 lbs	2.26 m / 89"
BB 3.10	Bay Brace 3'10"	4'	19.4 lbs	2.35 m / 92 1/2"
BB 5	Bay Brace 5'	5'2"	20.4 lbs	2.46 m / 96 3/4"
BB 5.4	Bay Brace 5'4"	5'4"	20.5 lbs	2.52 m / 99"
BB 7	Bay Brace 7'	7'	23.15 lbs	2.81 m / 110 3/4"
BB 8	Bay Brace 8'	8'	24.25 lbs	3.05 m / 119 1/2"
BB10	Bay Brace 10'	10'	27.56 lbs	3.52 m / 138 3/4"
Bay Brace Wedge			23.19 lbs	3.24 m / 126 1/2"



## System Truss (Lattice Girder)

Code	Identification	Dimensions	Weight (lbs)
ST5.4	2-bar ring type	21.5" x 5.4 ft.	44.8
ST7	2-bar ring type	21.5" x 7 ft.	59
ST8	2-bar ring type	21.5" x 8 ft.	67
ST10	2-bar ring type	21.5" x 10 ft.	84
ST14	2-bar ring type	21.5" x 14 ft.	115
ST17	2-bar ring type	21.5" x 17 ft.	140
ST20	2-bar ring type	21.5" x 20 ft.	165
ST21	2-bar ring type	21.5" x 21 ft.	170
ST24	2-bar ring type	21.5" x 24 ft.	195
ST28	2-bar ring type	21.5" x 28 ft.	225

# SYSTEM SIDE BRACKETS



**SSB24-36**



**SSB24**

## System Side Brackets

Item No.	Description	Length (ft.)	Weight (lbs)
SSB12	Side Bracket 12"	1'	3.15
SSB16	Side Bracket 16"	16"	13.54
SSB24	Side Bracket 24"	24"	16
SSB30	Side Bracket 30"	30"	20.17
SSB36	SideBracket 3'	3'	15.62
SSB24-36	AdjustableSide Braket	2'-3'	17.13





SCAFFEX  
YOUR SCAFFOLD EXPERT! JUNE





# CONVENTIONAL ACCESSORIES, PIPES & CLAMPS

BASE-PLATE & SCREW JACKS •  
CONVENTIONAL SCAFFOLDING ACCESSORIES •  
PIPES & CLAMP •

# BASE-PLATE & SCREW JACKS



**BP**



**BPSW**

## Base Plates

Code	Description	Weight (lbs)
BP	Base Plate Fix	2.21
BPSW	Base Plate Swivel	3.61



**SJ**



**SJ18 / SJ30**



**SJU-HEAD**

## Screw Jacks

Code	Description	Weight (lbs)
SJ	4.75 cm - 18" x 34 mm	10.8
SJ18	4.75 cm - 18" x 34 mm	11.5
SJ30	4.75 cm - 30" x 34 mm	16.5
SJU-HEAD	Jack with U-Head 24"	12.76
SJSW	4.75 cm - 18" x 34 mm	13



# CONVENTIONAL SCAFFOLD ACCESSORIES



**GIN W**



**SSTR**



**SFA**



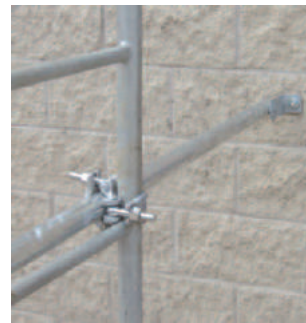
**RASUPP**



**BC**



**GIN P**



**SLAB C**



**ANC**

## Conventional Scaffold Accessories

Item No.	Description	Weight (lbs)
GIN W	Gin Wheel Pulley	12.32
GIN P	Gin Wheel Post	32.63
ROSE	Clamp Rossette	1
SFA	System Frame Adapter	5
SLAB C	Slab Clamp Post	23.28
BC	Beam Clamp	10
RASUPP	Right Angle Support	6
STABB	Scaffold Stabilizer	15
SSTR	Scaffold Storage Rack	50
ANC	Wall Anchor (2' up to 8')	2-10

# PIPES & CLAMPS



**RA**



**SW**



**RAW**



**SWW**



**RABEAM**



**RAWOOD**



**HALF**



**IPC**

## Clamps

Item No.	Description	Weight (lbs)
RA	Right-Angle Clamp	4
SW	Swivel Clamp	4
RAW	Right-Angle Wedge Clamp	3.5
SWW	Swivel Wedge Clamp	3.5
RABEAM	Right-Angle Beam Clamp	3.5
RAWOOD	Toe Board Clamp	3
HALF	Half Clamp	2
IPC	Inside Pipe Coupler	3

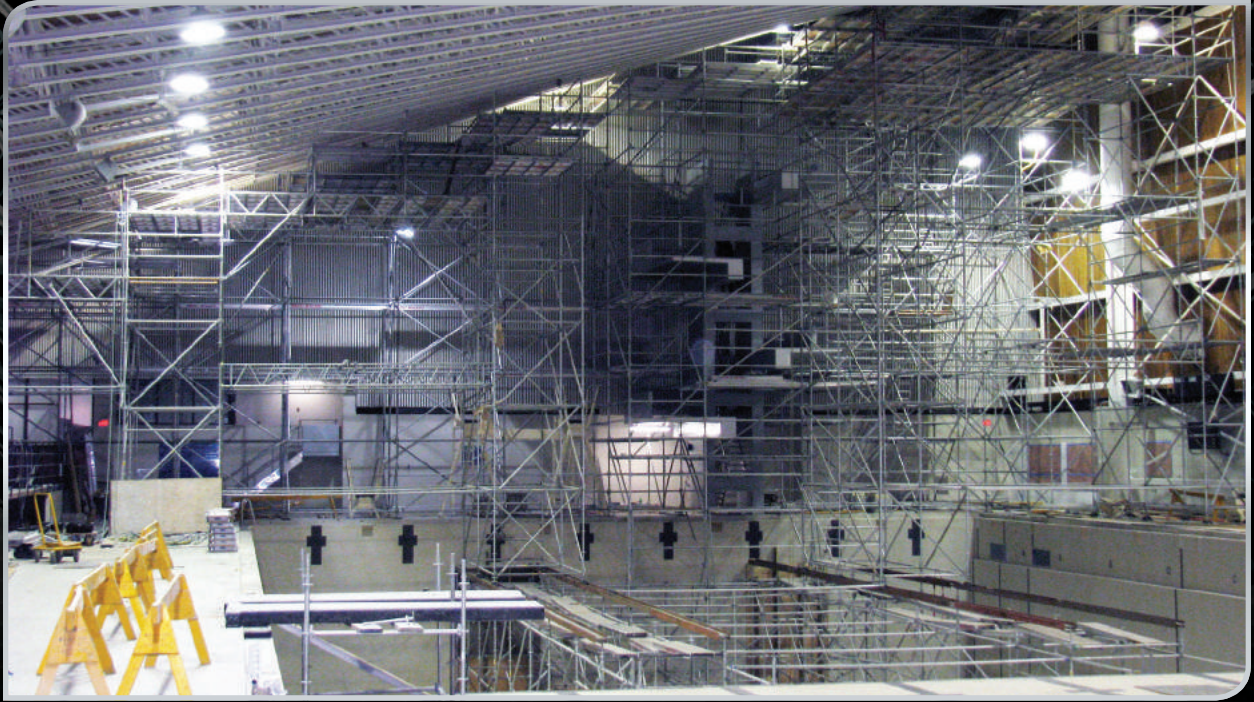
## PIPES - PP2 TO PP24

**Pipes from 2 ft. to 24 ft. in 1 foot increments.**

All pipes and clamps are used as a tying system between two scaffold components.

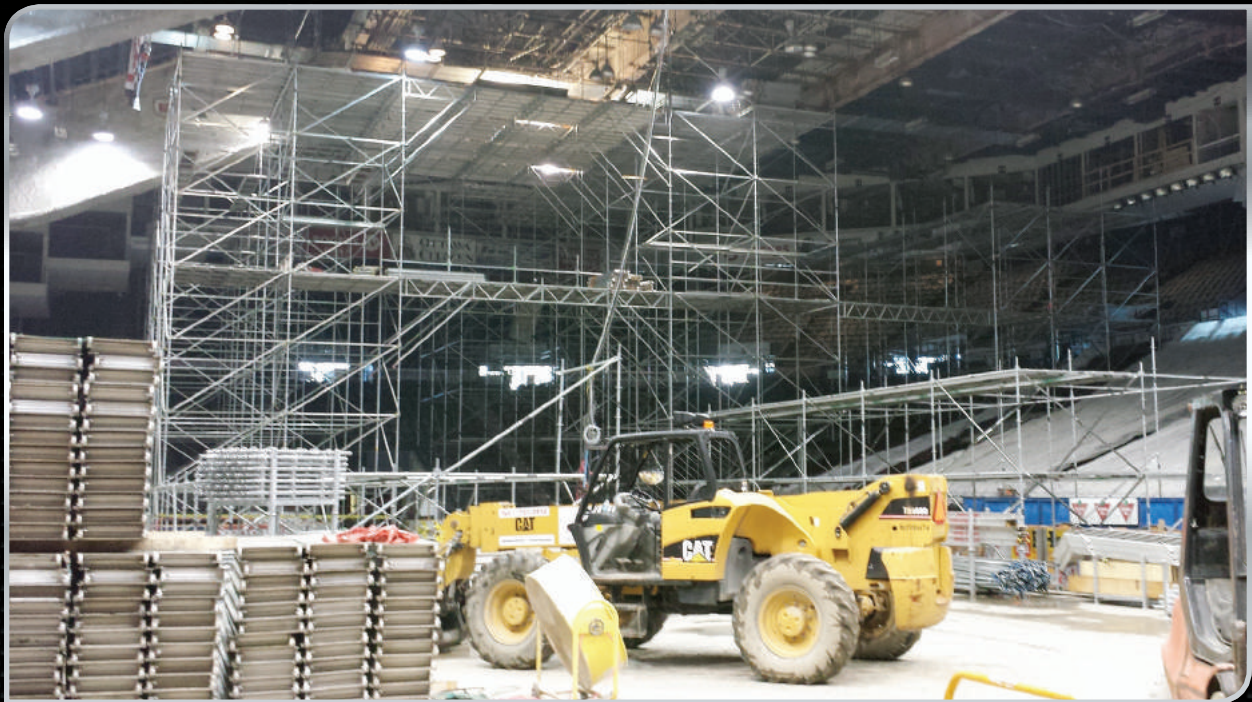






SCAFFEX  
YOUR SCAFFOLD EXPERT! INC.





SCAFFEX  
YOUR SCAFFOLD EXPERT! JUNE





# ACCESS & EGRESS

**STAIRS & LADDERS •**

**STEEL DECKS •**

**PLATFORMS •**

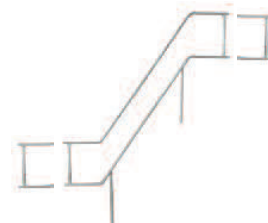
**WOOD PLANKS •**

**LADDER DECKS •**

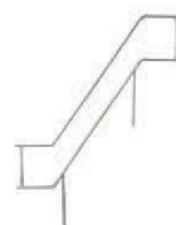
# STAIRS & LADDERS



**ES75**  
**ES 102M**



**ESRR7**



**ESRL7**



**ESR7**

## Stairs

Code	Description	Length (F)	Weight (lbs)
ES75	Stair With Landing	7'	118
ES102	Stair With Landing	10'	169
ESR7	Stair Hand Rail Short	7'	15
ESRL7	Stair Hand Rail Long	7'	26
ESRR7	Removable End-Rail	7'	27.5
ESR10	Stair Hand Rail Short	10'	17
ESRL10	Stair Hand Rail Long	10'	30
ESRR10	Removable End-Rail	10'	31



# STAIRS & LADDERS



**LB**



**LADD3**



**LADD5**

## Ladders

Item No.	Description	Weight (lbs)
LADD3	Ladder 3'	11
LADD5	Ladder 5'	16
LADDR	Ladder Bracket with Clamp	7



**SSS**



**SSR**



Typical Stair Installation (ring type)

## System Stairs

Code	Description	Length (F)	Weight (lbs)
SSR	System Stair Risers	7'	37
SSS	System Stair Sep	3'6"	18.5

# STEEL DECKS & PLATFORMS



**SD10**

## Steel Decks

Code	Description	Length	Width	Weight (lbs)
SD3.10	Steel Deck	3'10"	9"	8.3
SD4	Steel Deck	4'	9"	29
SD5	Steel Deck	5'	9"	39.6
SD5.4	Steel Deck	5'4"	9"	14.1
SD7	Steel Deck	7'	9"	17.9
SD8	Steel Deck	8'	9"	18.2
SD10	Steel Deck	10'	9"	20.75



**P720**

## Platforms

Code	Description	Length	Width	Weight (lbs)
P3620	Plywood & Aluminum	3'6"	19.5"	17.5
P31020	Plywood & Aluminum	3'10"	19.5"	18.1
P520	Plywood & Aluminum	5'	19.5"	30
P5420	Plywood & Aluminum	5'2"	19.5"	28
P720	Plywood & Aluminum	7'	19.5"	35
P724	Plywood & Aluminum	7'	24"	43
P728	Plywood & Aluminum	7'	28"	50
P820	Plywood & Aluminum	8'	19.5"	40
P824	Plywood & Aluminum	8'	24"	48
P828	Plywood & Aluminum	8'	28"	55
P1020	Plywood & Aluminum	10'	19.5"	49
P1024	Plywood & Aluminum	10'	24"	61
P1028	Plywood & Aluminum	10'	28"	73

# WOOD PLANKS & LADDER PLATFORMS



## Wood Planks

Item No.	Size	Weight (lbs)
WP1	1' X 1'	5
WP2	2' X 9.5"	9
WP3	3' X 9.5"	14
WP4	4' X 9.5"	18
WP5	5' X 9.5"	22
WP6	6' X 9.5"	27
WP7	7' X 9.5"	31
WP8	8' X 9.5"	36
WP10	10' X 9.5"	44
WP12	12' X 9.5"	53
WP16	16' X 9.5"	70.4



## Ladder Platforms

Code	Description	Length	Width	Weight (lbs)
P728L	Alum. Ladder Platform	7'	28"	57
P828L	Alum. Ladder Platform	8'	20"	61
P1028L	Alum. Ladder Platform	10'	28"	76





SCAFFEX  
YOUR SCAFFOLD EXPERT! JUNE





# SHORING

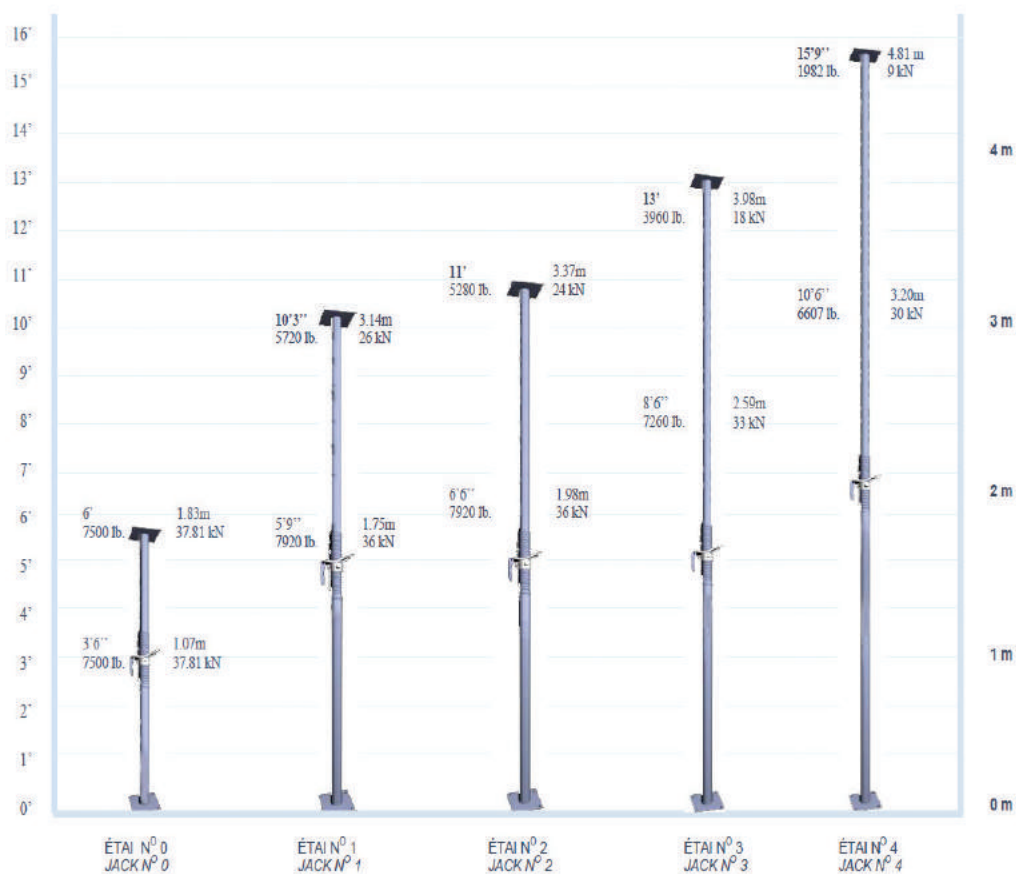
- TUBE SHORING POSTS •
- MULTI-PROP POSTS •
- ALUMINUM JOISTS •
- ALUMINUM STRINGERS •

# TUBE SHORING POSTS

## Tube Shoring Posts

Item No.	Shoring Post Height		Weight (lbs)
	Closed (F)	Open (F)	
Shore 0	3'6"	6'	39
Shore 1	5'6"	10'	44
Shore 2	6'6"	11'	52
Shore 3	8'6"	13'	51.8
Shore 4	10'6"	15'6"	58.6

For load chart please contact us.





# MULTI-PROP POST

## Multi-Prop Post

Item No.	Shoring Post Height		Weight (lbs)
	Closed (F)	Open (F)	
MP250	4'9"	8'2"	34.5
MP350	6'3"	11'6"	43.5
MP480	8'6"	15'9"	55.2
MP625	14'	20'6"	76.8

For load chart please contact us.



# ALUMINUM JOISTS



## Aluminum Joist Beams

Code	Description	Weight (lbs)
ALUM4	4' Aluminum Beam	15
ALUM5	5' Aluminum Beam	19
ALUM6	6' Aluminum Beam	23
ALUM8	8' Aluminum Beam	30
ALUM10	10' Aluminum Beam	38
ALUM12	12' Aluminum Beam	45
ALUM14	14' Aluminum Beam	53
ALUM17	17' Aluminum Beam	64
ALUM18	18' Aluminum Beam	68
ALUM20	20' Aluminum Beam	73
ALUM21	21' Aluminum Beam	79
ALUM24	24' Aluminum Beam	90
ALUM32	32' Aluminum Beam	122
ALUM40	40' Aluminum Beam	163



## ALUM VC



## ALUM JC

## Joist Beam Clips

Code	Description	Weight (lbs)
ALUMVC	V Clip to clamp a joist to a round tube frame	1.3
ALUMJC	Use to clip a joist to another joist	0.27



# ALUMINUM STRINGERS



## Aluminum Stringer Beams

Code	Description	Weight (lbs)
ALSTR6	Aluminium Stringer 6'	21
ALSTR9	Aluminium Stringer 9'	31.5
ALSTR10	Aluminium Stringer 10'	35
ALSTR10.5	Aluminium Stringer 10.5'	37
ALSTR11	Aluminium Stringer 11'	38.5
ALSTR12	Aluminium Stringer 12'	42
ALSTR16	Aluminium Stringer 16'	56
ALSTR16.5	Aluminium Stringer 16.5'	58
ALSTR17	Aluminium Stringer 17'	59.5
ALSTR18	Aluminium Stringer 18'	63
ALSTR20	Aluminium Stringer 20'	70
ALSTR21	Aluminium Stringer 21'	73.5
ALSTR24	Aluminium Stringer 24'	84
ALSTRSP	Aluminium Stringer Splice Plates	10





SCAFFEX  
YOUR SCAFFOLD EXPERT! JUNE





**GARBAGE CHUTE**

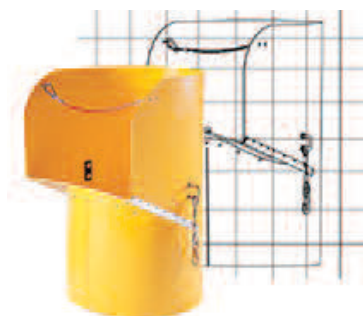
**FENCING**

**COVERINGS**

**SCAFFOLD SHEETING •**

**DEBRIS NETTING •**

# GRABAGE CHUTES



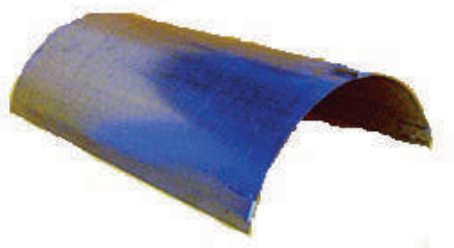
**CHHOP**



**CHDOOR**



**CHREG**



**CHLINER**

## Garbage Chutes

Item No.	Description	Diameter	Length	Weight (lbs)
CHHOP	Top Hopper	30"	48"	43
CHDOOR	Door Section	30"	48"	52
CHREG	Regular Chute	30"	48"	37
CHLINER	Steel Liner	---	---	40



# TEMPORARY FENCES

## TEMPORARY FENCES

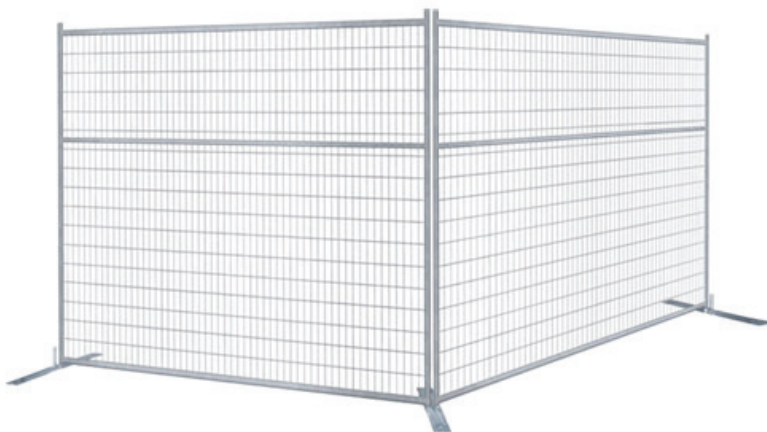
- 6' X 10'
- Galvanized steel
- Steel square tubing
- Heavy gauge welded wire mesh



**FENB**



**FENT**



**FEN610**

## SCAF-LITE SCAFFOLD SHEETING

### Features

- Premium grade string reinforced poly sheeting
- Manufactured with reinforced eyelet bands for fastening bungee ties
- 6 mil thickness = White eyelet bands
- 10 mil thickness = Blue eyelet bands
- Highly tear resistant
- Mildew resistant
- UV treated
- Clear Non-Flame Retardant
- Flame Retardant meets NFPA 701 Test Method II
- 7'4" x 136'

### Benefits

- Provides a total weather protection enclosure
- Provides a containment for dust & debris
- Increases temporary heating efficiencies
- Easy to install & remove with Eagle bungee ties
- Handles well in low or extreme temperatures
- Allows sunlight to transmit through
- Reduces TIME and LABOR during installation





# DEBRIS NETTING

## DEBRIS NETTING

### Features

- High density knitted polyethylene mesh (HDPE)
- 1/16" mesh openings
- Lightweight, tear resistant mesh
- Roll width: 4', 5'6", 8'6", 10', 12', 20'
- Roll length: 150 ft.
- UV treated
- Edges include reinforced eyelet button holes
- Flame Retardant available, meets NFPA 701 Test Method II
- Scaffold netting, guardrail netting, floor-to-floor netting
- Custom color available

### Benefits

- Protects dust, debris & tools from falling
- Protect workers, pedestrians & adjacent properties
- Creates a protective scaffolding enclosure
- Creates a wind block or shade cloth
- Provides a visual barrier for added privacy
- Tear resistant
- Will not unravel when cut





SCAFFEX  
YOUR SCAFFOLD EXPERT! JUNE





# HOISTS

RP-2001 •

PATRIOT •

BETA MAX •

GEDA HOIST •

MINIFOR HOIST •

## RP-2001 RACK & PINION MATERIAL HOIST

- 2,000 lb Max Load Capacity\*
- 400 ft Max Vertical Travel\*\*
- 70 fpm Operating Speed\*
- 45"W x 70"L x 48"H Clear Platform
- 100% Duty Cycle
- 220V / 1P / 60Hz / 30A\*
- Base Unit Weight: 1,440 lbs
- Steel Construction
- 90 Degree Pivoting Platform
  - Allows for multiple load configuration*
- Soft-Start/Soft-Stop
  - Variable Frequency Drive for Smooth Acceleration and Deceleration*
- Fast Acting Overspeed Brake
- Safety Chains on Access Sides
- Drop-down Ramps on Access Sides
- Extendable Pendant Control
- Water Tight Connectors
- 5'H Tower Sections (Stackable)
- Anchors to Building or Scaffolding
  - Use standard anchorage brackets or custom made brackets every 10-15'*
- Material Use Only

\* Constant voltage is required to prevent damage and to maintain specified lift capacity and speed.

\*\* Consult a structural engineer for heights over 200 ft or when unsure of required anchoring.

**Material Use Only  
No Riders**





# HOISTS

## PATRIOT 1000, 2000 CABLE HOIST

- HTH Portable Cable Hoists are commonly used in conjunction with scaffolding or roof construction.
- Patriot hoists are designed to withstand harsh outside environments commonly found on construction sites.
- The Patriot Series hoists material by utilizing a continuous duty cycle fail-safe brake motor coupled with a unique Cyclo-Drive gear reducer.
- This patented gear reducer provides a 95% efficiency; far better than regular planetary gear boxes.
- Dual speed operation is controlled by a low voltage (24vdc) pendant connected to a programmable logic drive. This provides smooth acceleration and deceleration which protects your valuable material and tools.



Hoist	Lifting Capacity	Lifting Height	Dual Speeds	Power
Patriot 1000	1000 LBS	250 ft.	85 & 42 FPM	220V/1P or 230/3P
Patriot 2000	2000 LBS	200 ft.	55 & 27 FPM	220V/1P or 230/3P

## BETA MAX

- **Lift capacity: 450 lbs**
  - **Lift speed: 80 fpm**
  - **Lift height\*: 125' or 175'**
  - **Wire rope length: 250 ft. (1/4" GAC) / 350 ft. (3/16" GAC)**
  - **A/C power: 110v, 20amp, 1Φ - Optional 220v available**
  - **Track width: 24" Standard, 15" Narrow**
- 
- Hoist of choice for expedited Scaffold Erection & Dismantlement for over 20 years
  - Up to 20% more efficient use of man power, resulting in less worker exhaustion or risk of injury and greater productivity
  - Perfect jobsite partner for Industrial Boiler Maintenance
    - engineered to fit easily through boiler access ports for system scaffold E&D
  - Narrow Track System option available for Boiler Access Ports less than 24" wide
  - Multi-purpose hoist solution delivers materials to the job level after scaffold is in place
  - Durable lightweight design that is easy to transport and install with no tools required
  - Standard and narrow track systems available
  - Customized operational heights available
  - Long lasting performance with minimum maintenance required





# HOISTS

## GEDA HOIST

- **Load capacity:** 265 lbs
- **Lifting capacity:** 67/200 ft/min
- **Power supply:** 0.6/1.8 hp/ 120V / 60 Hz
- High-performance, low-maintenance design
- Customized load-bearing capacities
- Industry-best warranties and engineering support
- Space-saving design for universal utility

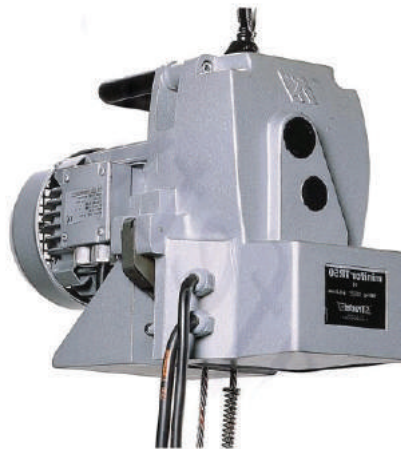


## MINIFOR HOIST

MINIFOR™ hoists are used with a Maxiflex wire rope. They can be used to lift or pull objects over great distances depending on the wire rope length. They are suitable for use in numerous configurations. They are operated through a pushbutton control. Optionally, the MINIFOR™ hoist can be equipped with a wire rope reeling device or a wireless remote control.

Portable hoist to lift and pull loads, for utilisation in numerous configurations.

- Capacity 100kg, 300kg or 500kg
- Low weight
- Quick installation
- Long wire rope length
- Easy to use, light-weight, robust, powerful
- Available as single phase and three phase model
- Alternatively with cable reeling device (max. 40m), wireless remote control, set of sheave blocks



Model	Dimensions L x W x D in.	Weight with- out wire rope lbs (kg)	WLL lbs. (kg)		Speed fpm (mpm)		Power Supply			Optional WR Reeler	
			Direct	Sheaved	Direct	Sheaved	single phase 115 V	single phase 220 V	three phase 220 V	66 ft. 20 m	100 ft. 35 m
TR10	14 x 9 x 17	46 (20)	220 (100)	441 (200)	50 (15)	25 (7.5)	◆	◆		◆	◆
TR30	14 x 9 x 17	46 (20)	660 (300)	1,320 (600)	17 (5)	8.5 (2.5)	◆	◆		◆	◆
TR30S	19 x 9 x 17	71 (32)	660 (300)	1,320 (600)	43 (13)	21 (6.5)	◆	◆	◆		
TR50	19 x 9 x 17	71 (32)	1,000 (453)	2,000 (906)	23 (7)	11.5 (3.5)	◆	◆	◆		





# KLIMERLITE

# KLIMERLITE

Performance. Sized right.

The mast-climbing work platform designed for efficient multiple-trade access.

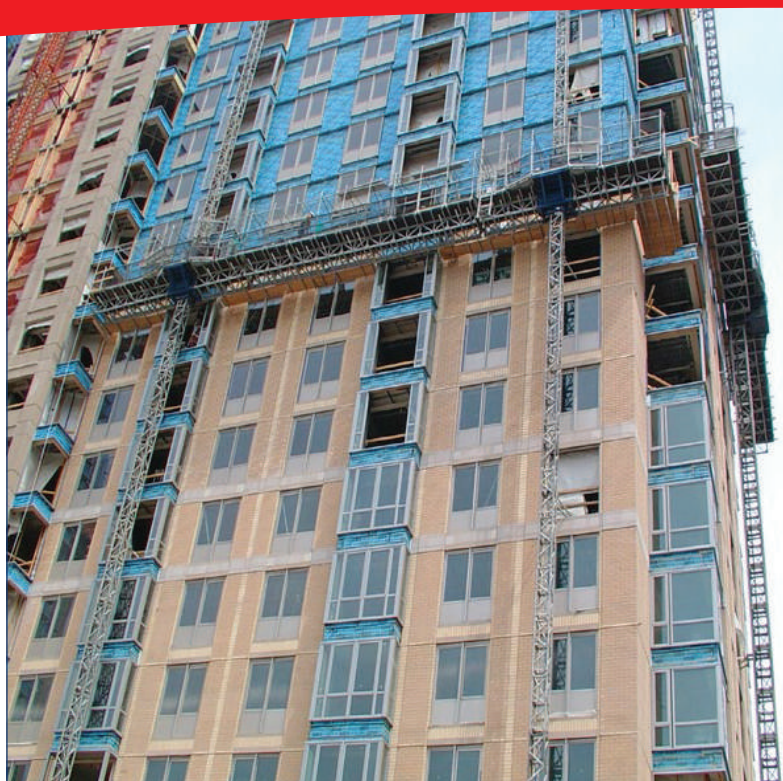
## Fast, efficient and versatile!

Quick to stage and quick on the job, the **KLIMERLITE** is designed specifically for **medium to light-duty construction** projects from 30 to 300 feet high.

Assembly of this mast climber is fast and efficient, with a minimum of tools. Its compact size is perfect for restricted areas and is even small enough to fit through standard doors!

**KLIMERLITE's** efficient design can handle capacities from **3,000 to 11,700 lbs.**, with a **free-standing height up to 45 feet** and industry-leading fast vertical **travel speeds up to 39 feet per minute**. Its self-contained power supply with self-propelled options allows for rapid re-location of both the platform and materials between stations.

A wide range of accessories allow for platform extensions, platform twinning, **two- and four-wheel-drive chassis options**, cranes, weather protection and more.



*KLIMERLITE provides complete project access for multiple trades.*

### Performance Specifications:

#### Single Mast

Capacity Range	6,000 - 3,000 lbs (2,727 - 1,364 kg)
Platform Length	11 - 45 ft (3.35 - 13.72 m)
Platform Width	4 - 14 ft (1.22 - 4.27 m)
Vertical Travel Speed - Variable	0 - 39 ft (0 - 11.89 m) per minute
Maximum free-standing height	45 ft (13.72 m)
Maximum spacing between tie anchors	40 ft (12.20 m)
Maximum anchored mast height	330 ft+ (100 m+) Contact Klimer for heights exceeding this

#### Twin Mast

Capacity Range	11,700 - 6,000 lbs (5,318 - 2,727 kg)
Platform Length	36 - 104 ft (10.98 - 31.71 m)
Platform Width	4 - 14 ft (1.22 - 4.27 m)
Vertical Travel Speed - Variable	0 - 39 ft (0 - 11.89 m) per minute
Maximum free-standing height	45 ft (13.72 m)
Maximum spacing between tie anchors	40 ft (12.20 m)
Maximum anchored mast height	330 ft+ (100 m+) Contact Klimer for heights exceeding this

### Drive Specifications:

Drive System	Hydraulic rack-and-pinion drive	As per single-mast configuration.
Power System	20 hp gasoline/propane engine or 20 hp electric motor	As per single-mast configuration.

### Component:

	L	W	H	Weight:
Drive Unit	60" x 30" x 60"	1,524 x 762 x 1,524 mm		1,845 lbs (838.64 kg)
Mast Section	20" x 16" x 60"	508 x 406 x 1,524 mm		242 lbs (110.0 kg)
Platform Section 4 ft (1.22 m) long	48" x 48" x 24"	1,219 x 1,219 x 610 mm		245 lbs (111.36 kg)
Platform Section 2 ft (.61 m) long	24" x 48" x 24"	610 x 1,219 x 610 mm		175 lbs (79.55 kg)
Pedestal	101" x 61" x 27"	2,565 x 1,549 x 686 mm		1,105 lbs (502.27 kg)
Chassis	176" x 98" x 35"	4,470 x 2,489 x 889 mm		3,500 lbs (1,590.91 kg)
Freestanding Pedestal	188" x 100" x 27"	4,775 x 2,540 x 686 mm		2,450 lbs (1,114 kg)

### Safety Features:

- Double travel-limit switches top and bottom.
- Redundant drive system with speed-limiting device.
- Maintenance-free brake system.
- Auxiliary engine for emergency descent.
- Travel locks and limits on platform extension beams.
- 12V control voltage.

### IMPORTANT!

Study operator's manual before use. Do not load above recommended safe working loads. No materials at any time to be placed on platform extensions.

For configurations not shown above, consult your local Klimer dealer or operator's manual. This product must be used in conformity with safe practice and applicable statutes, regulations, codes and ordinances. Specifications of products and equipment shown herein are subject to change without notice.



# Outperform on any application!



## Infrastructure – Bridge Piers

Industry-leading design dramatically increases production over other types of access. Increase safety, efficiency and profits on your next bridge pier restoration, dam, utility or aircraft hangar project.



## Restoration

Fewest tie-ins and highest freestanding capability. Reduce labour costs and preserve building facades. Swing stage and scaffold can not match Klimer's heavy capacity for removing large volumes of material.



## Glazing – EIFS

Installation of panelized curtain wall, large glass or stone units is highly efficient with Klimer's gantry system. Glazing and EIFS contractors eliminate pre-loading and greatly reduce the time and cost of material handling.



## Masonry – Concrete

Heighten crew efficiency and productivity with industry-leading speed/capacity ratios combined with the ability to quickly adjust the height of the platform to optimum work level.



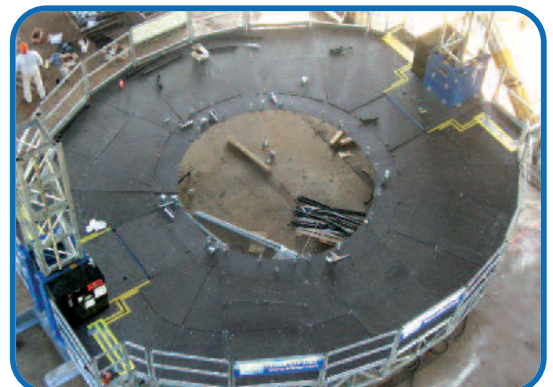
## Interior Applications

Mechanical, Electrical, Drywall, Granit and Atrium work are perfect applications. A multi-trade platform means fewer pieces of equipment on site and less interruptions due to install / dismantle of other access. Mobile chassis options, highest freestanding height and fewest tie-in deliver efficiencies even in restrictive or confined spaces.



## Customized Solutions

For Energy, Aerospace and other highly specialized applications, Klimer's professional representatives consult on complex access requirements to deliver integrated solutions.







SCAFFEX  
YOUR SCAFFOLD EXPERT! JUNE





SCAFFEX  
YOUR SCAFFOLD EXPERT! JNE



CONTACT US

**T 613.907.7223 or F 613.741.9141**

**scaffex.ca**  
**office@scaffex.ca**

Ottawa, ON Canada

**SCAFFEX**  
*INC.*  
**YOUR SCAFFOLD EXPERT!**

WE ARE A PROUD MEMBER OF

